



JSPORT PERFORMANCE ACCESSORIES

2481 Pine St. Pomona, CA 91767

Phone/Fax: 866.343.5510

**2017+ Ridgeline Plateau Roof Rack Installation**

COMPONENTS INCLUDED	
(1) Windscreen #JSRLP025	(2)Rear Mounting Brackets(LARGE)
(5) Cross Bars #JSRLP053	(2)Front Mounting Brackets(SMALL)
(2) Side Rails (Left,Right) # JSRLP054	

HARDWARE INCLUDED	
( 40 ) 6mm Bolts	( 4 ) 8mm Mounting Bolts
( 40 ) 6mm Flange Nuts	( 4 ) 1 IN. Stainless steel stand-offs

TECH NOTES
* WE RECOMMEND PLACING BLANKETS, TOWELS, ETC. ON THE ROOF AND WINDSHIELD DURING THE INSTALLATION OF THE PLATEAU! TO PROTECT YOUR VEHICLE FROM ACCIDENTAL DAMAGE. TWO PEOPLE WOULD BE BEST FOR THIS BUILDING PROCESS DUE TO THE LENGTH OF THE PIECES AND PLACEMENT ON TOP OF THE VEHICLE.*

PART #	DESCRIPTION
JSRLP024	2017+ Ridgeline Plateau Roof Rack



**INSTALLATION**

1. Remove weather stripping from both the driver & passenger sides of the vehicle.
2. Locate OEM bolt locations where the weather stripping was.
3. Install the 4 stainless steel stand-offs to OEM bolt locations.
4. Loosely attach the front and rear mounting brackets to the stainless steel stand-offs.
5. Place the side rails with the brackets. (WE RECOMMEND USING TWO PEOPLE FOR THIS STEP)
6. Loosely fasten the brackets to the stand-offs with the hardware provided. (DO NOT TIGHTEN COMPLETELY)
7. REPEAT STEPS 5 & 6
8. Locate wind deflector and fasten to each side of the side rails with the provided hardware.
9. One by one, install the cross bars from front to rear. (THE CROSS BAR WITH THE SMALL CRESCENT SHAPED CUTOUT WILL BE LAST. FACE THE CUTOUT TOWARDS THE REAR ALLOWING CLEARANCE FOR THE ANTENNA.)
10. Fasten each bracket connected to the stand-offs tightly, once you have ensured that everything is properly aligned proceed to tighten down and double check the remaining loose nuts & bolts.



[WWW.JSPORTUSA.COM](http://WWW.JSPORTUSA.COM)

JSPORT PERFORMANCE ACCESSORIES

Phone/Fax: 866.343.5510

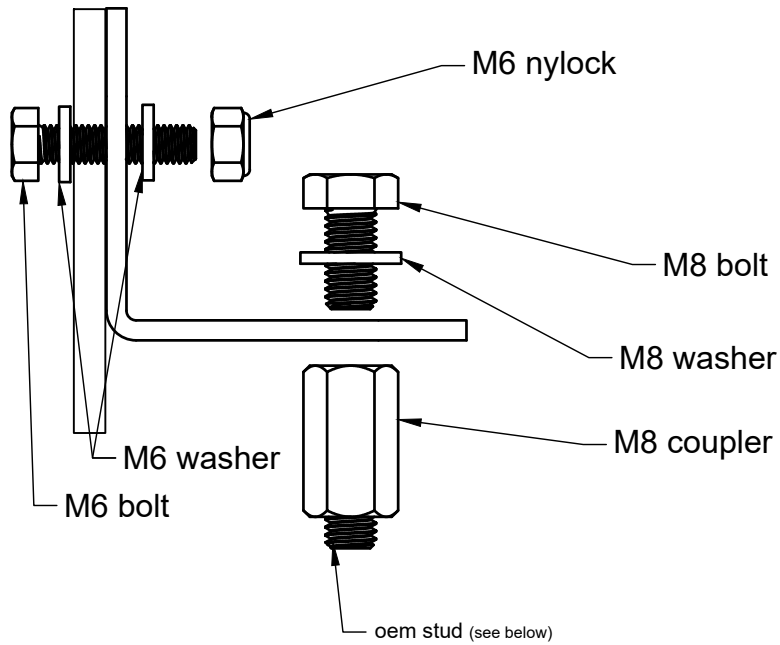


[www.facebook.com/isportusa](http://www.facebook.com/isportusa)

[www.instagram.com/isportusa](http://www.instagram.com/isportusa)

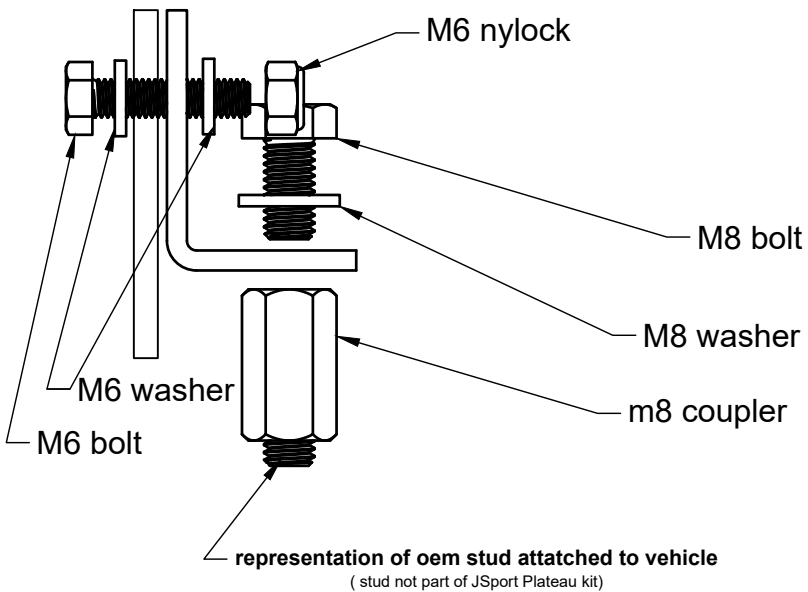
outboard inboard

### Rear bracket hardware orientation

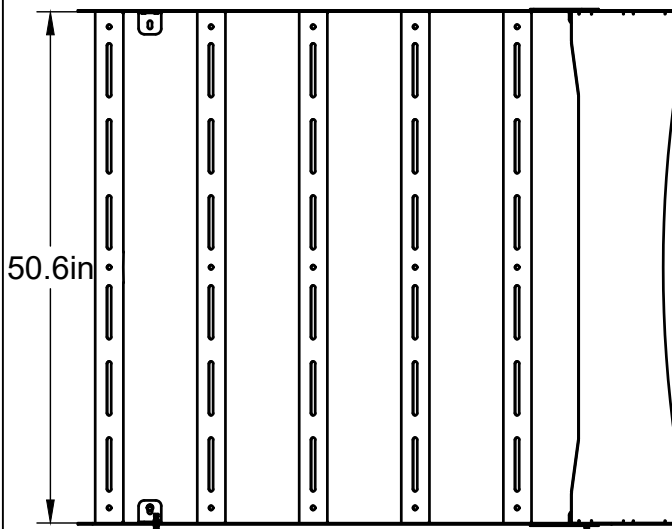
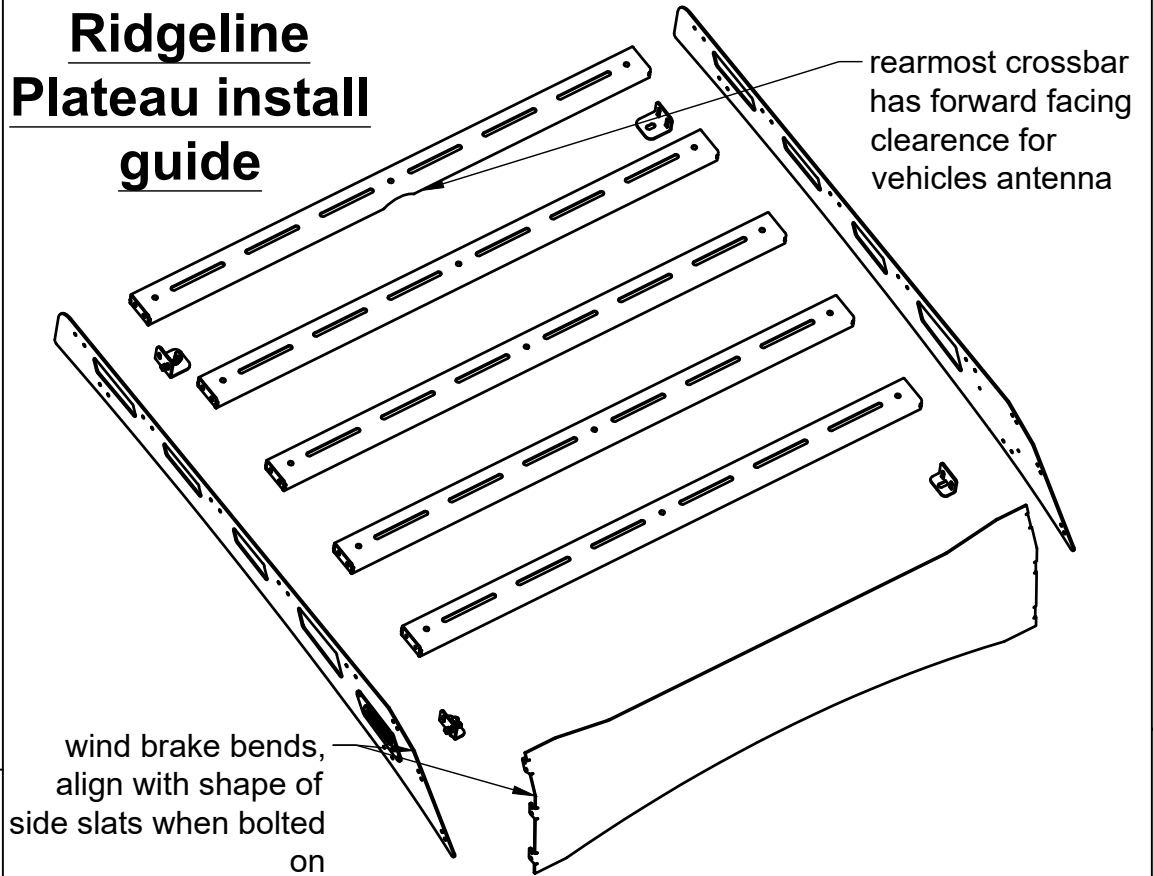


outboard inboard

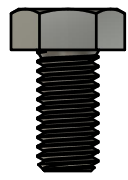
### Front bracket hardware orientation



## Ridgeline Plateau install guide

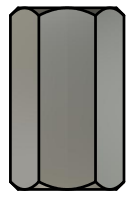


M8 bolt



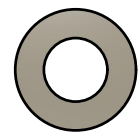
4x

M8 coupler



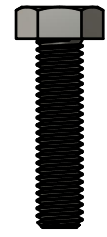
4x

M8 washer



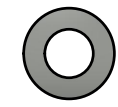
4x

M6 bolt



40x

M6 washer



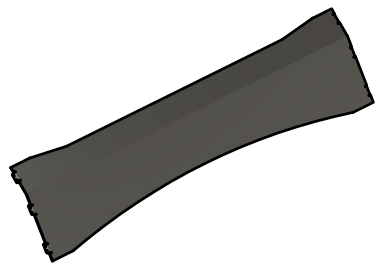
80x

M6 nylock



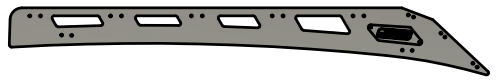
40x

wind break



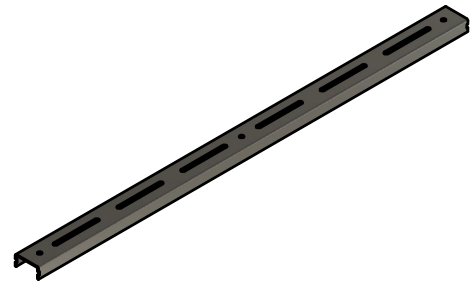
1x

side slat



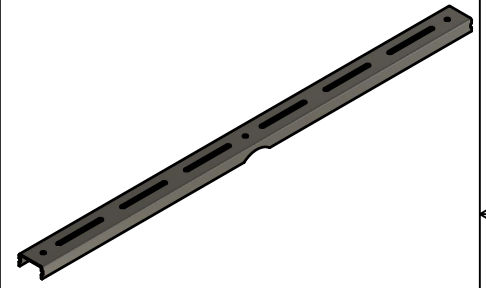
2x

cross bar



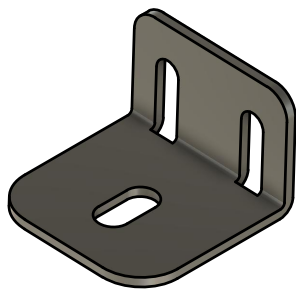
4x

cleared cross bar



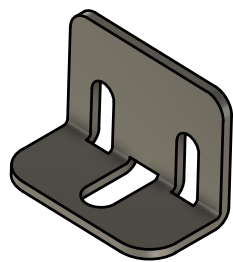
1x

rear mount bracket



2x

front mount bracket



2x

